

Control System Studio: First Steps

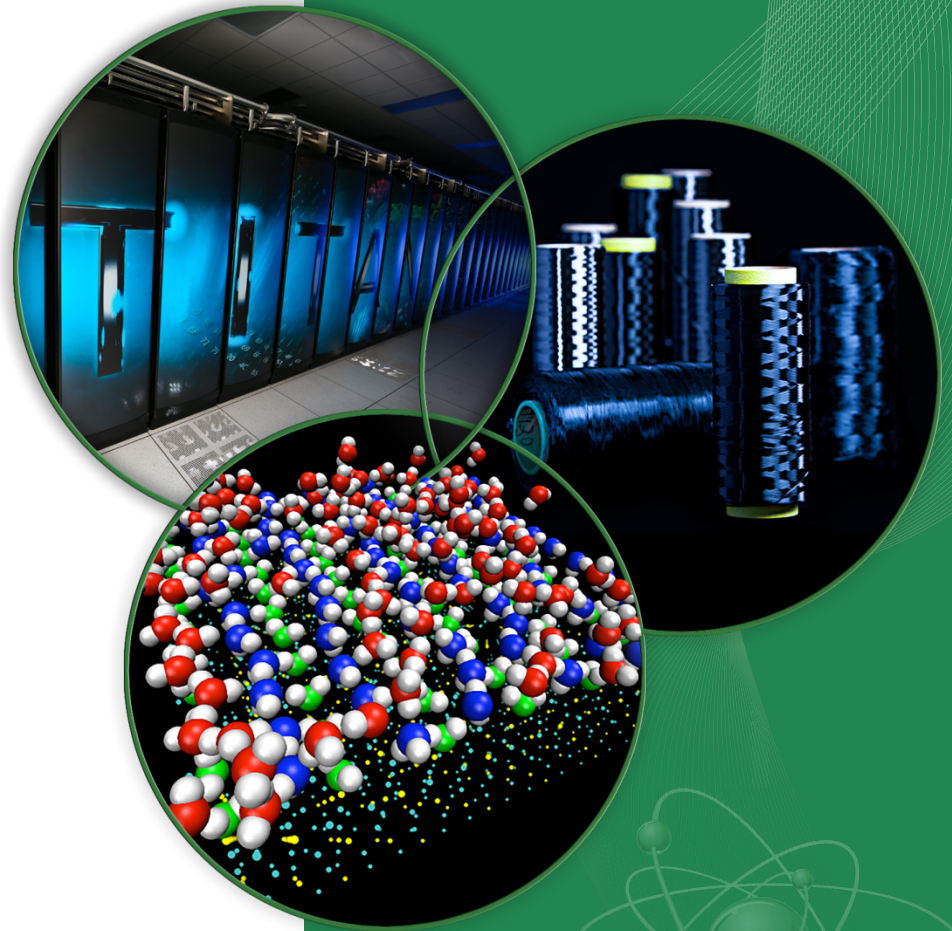
Kay Kasemir

ORNL/SNS

kasemirk@ornl.gov

Sept. 2014

ORNL is managed by UT-Battelle
for the US Department of Energy



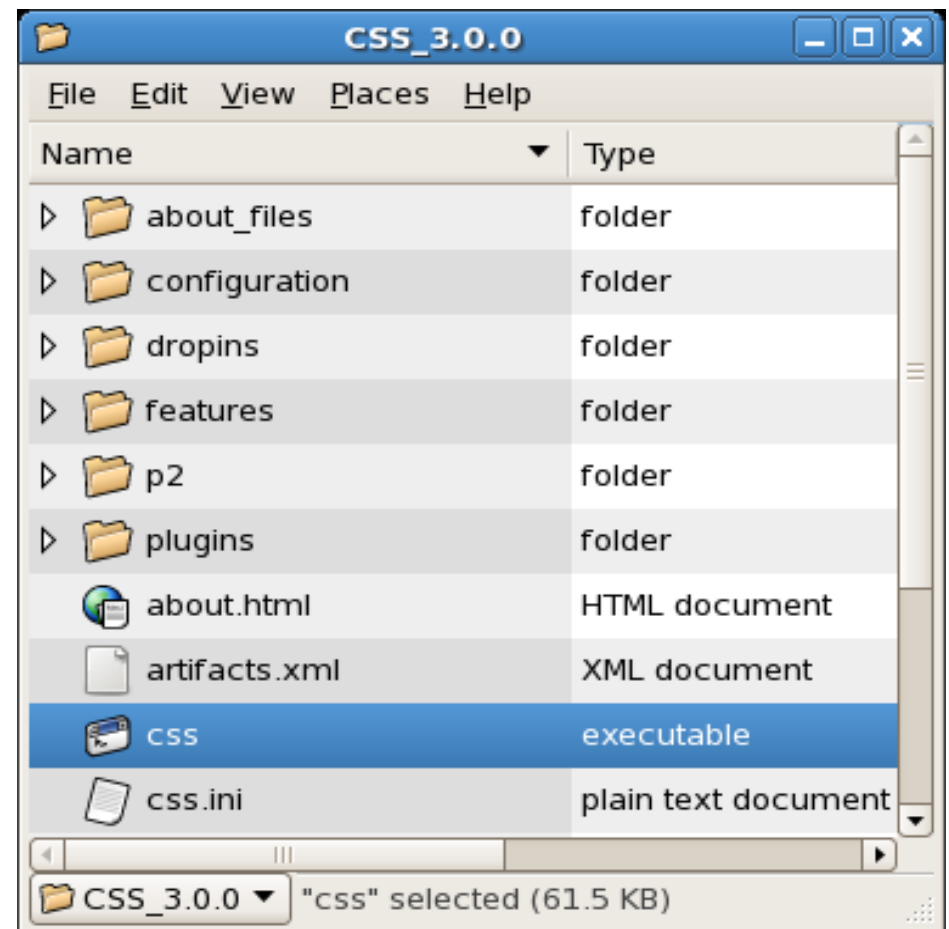
 **OAK RIDGE**
National Laboratory

Exercise: Start CSS

Precondition:

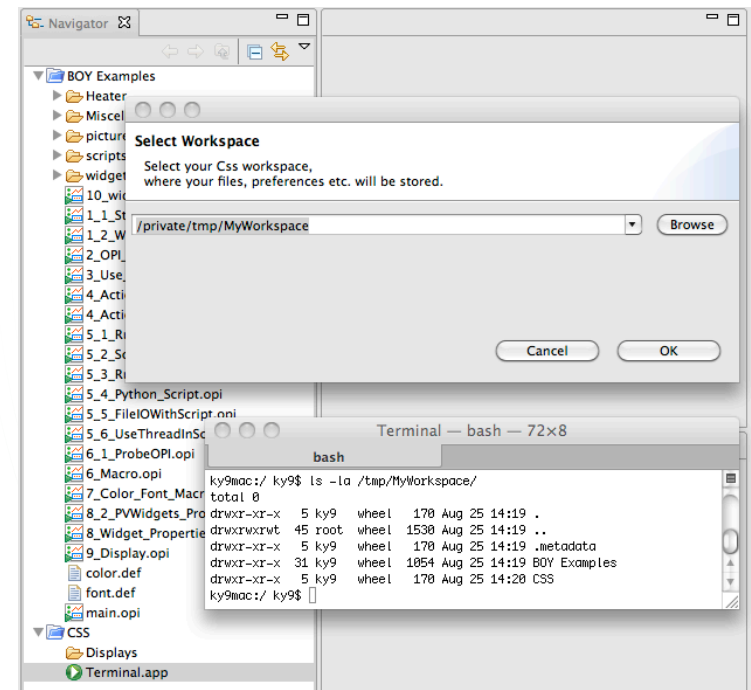
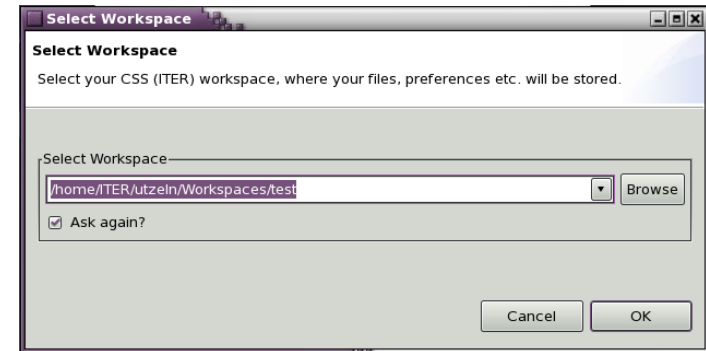
You somehow got CSS onto your computer

- Start the executable
 - Linux: css
 - Windows: css.exe
 - Mac OS X: css.app



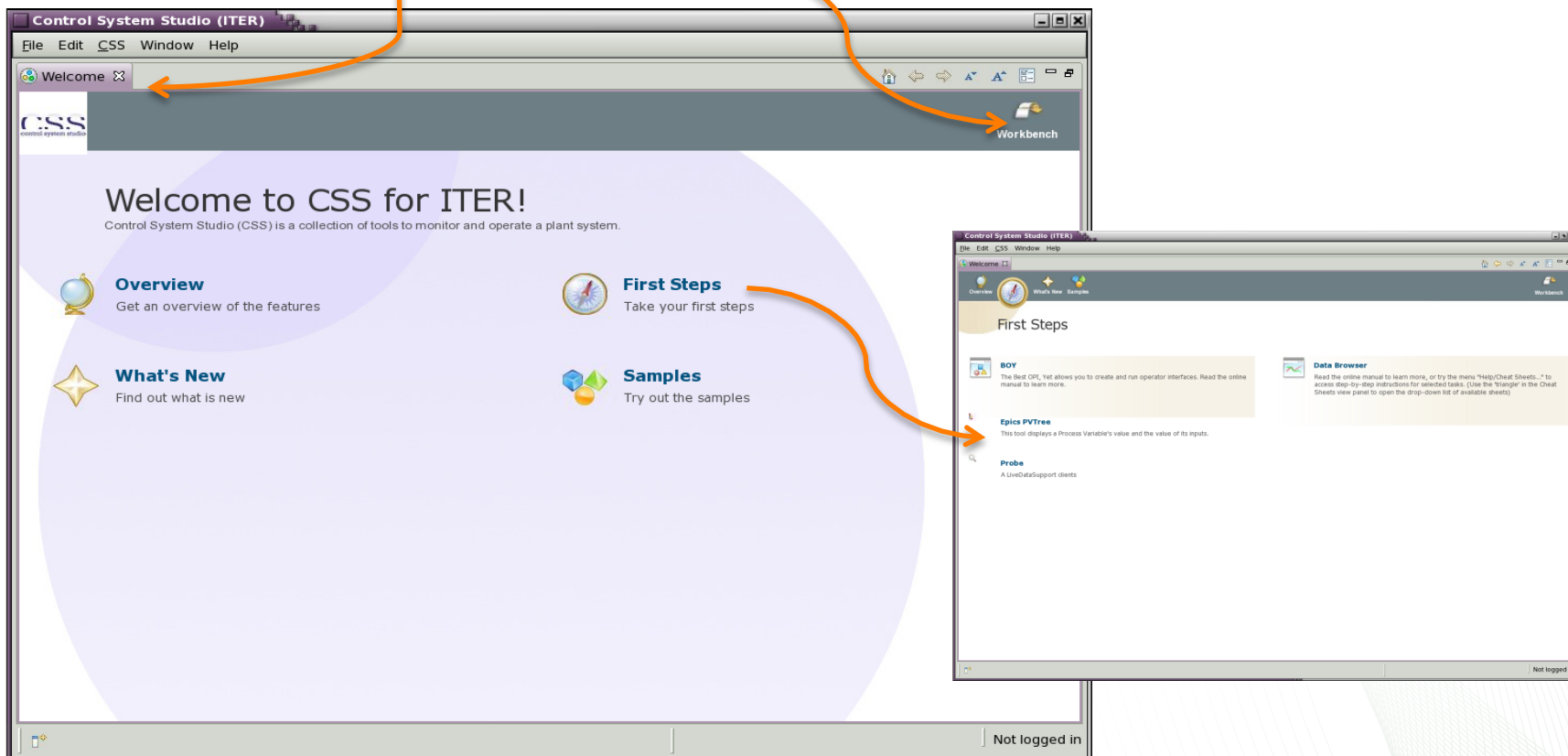
Workspace

- Workspace
 - Directory where you store files
 - Hidden `.metadata` directory with settings
- Most versions of CSS prompt for a workspace at startup
 - Check or change later via menu *File, Switch Workspace*
- Run only one instance of CSS per workspace!
 - Each user should have own workspaces
 - One for development, one for operation, ...



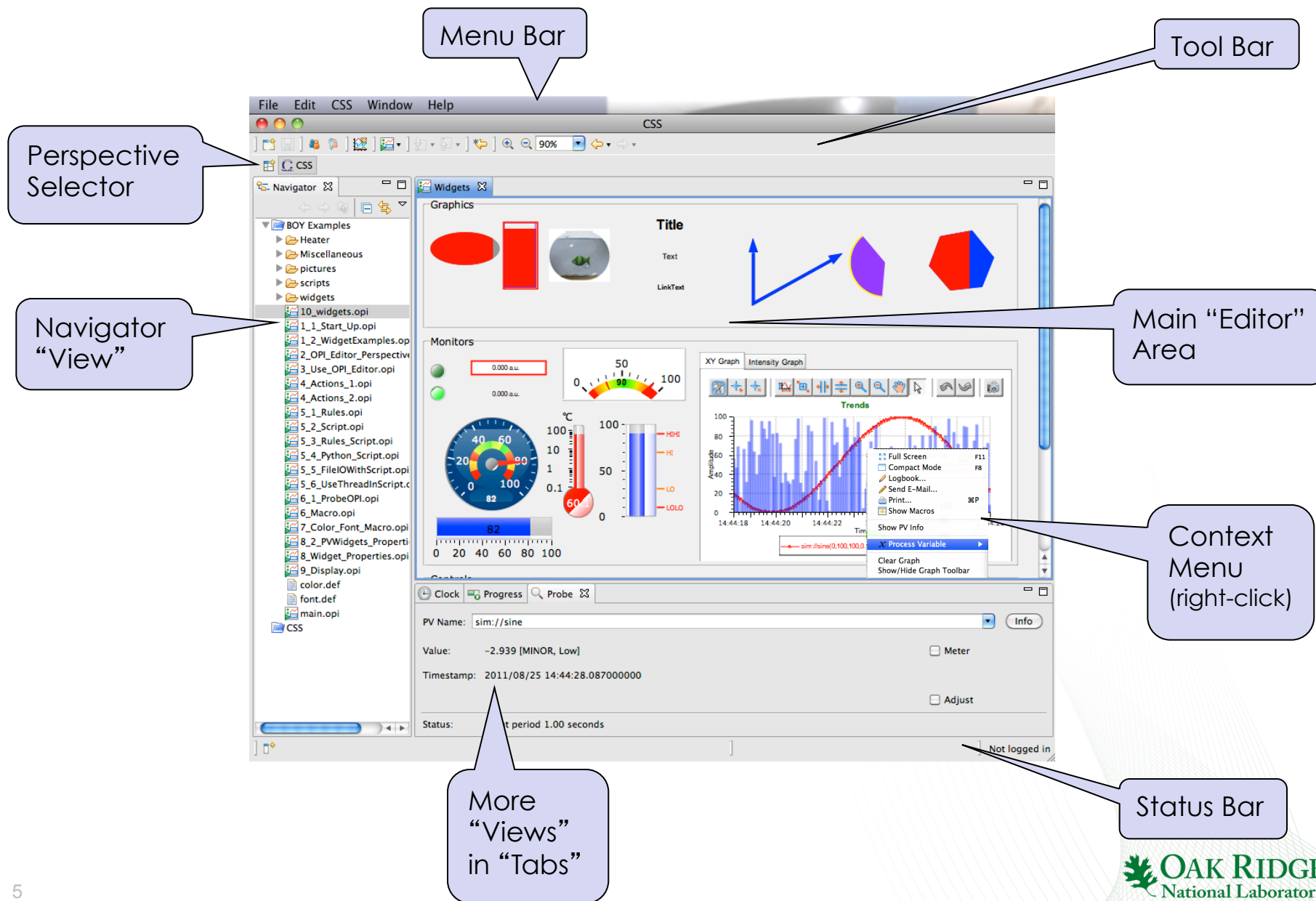
“Welcome”

- Displayed when CSS opened for the first time (i.e. on a new workspace)
 - Close here or here



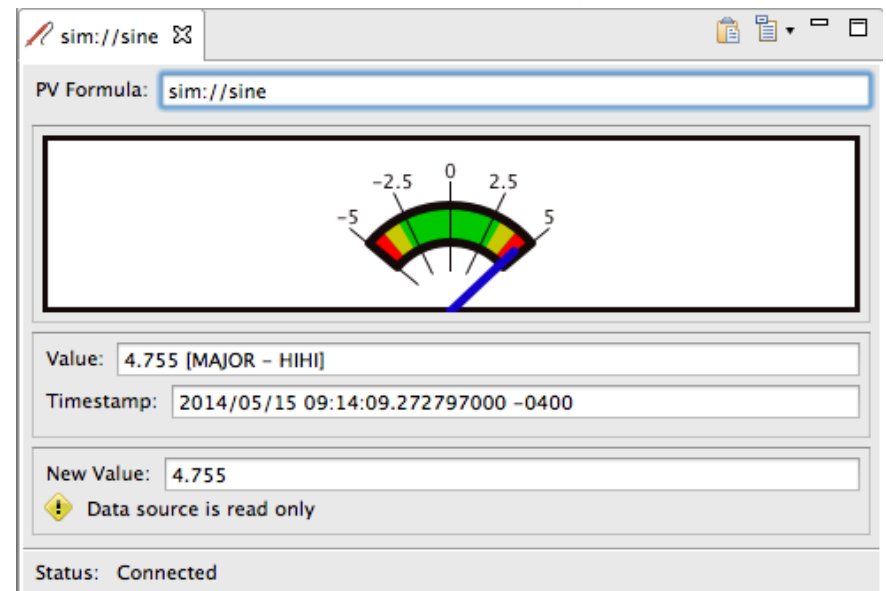
- Re-open: Menu *Help*, *Welcome*

Workbench



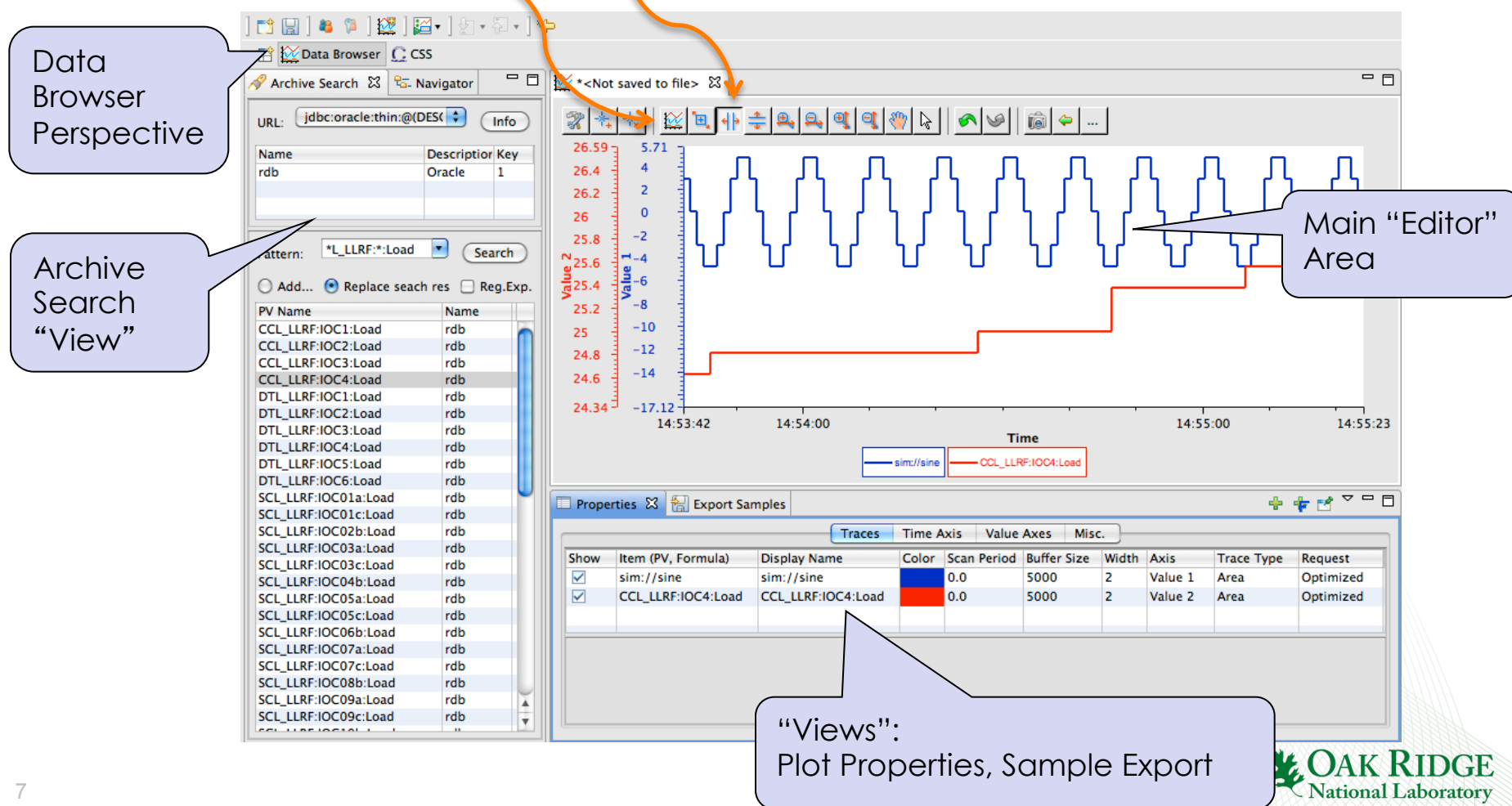
Exercise: Probe

- Menu *CSS, Diagnostic Tools, Probe*
- Enter PV name “sim://sine”
- Close Probe
- Open it again
- Note previously entered PV in history
- Move Probe to other view area
- Close Probe



Exercise: Data Browser

- Menu CSS, Trends, Data Browser
- Plot context menu, *Add PV*, “sim://sine”
- Wait a little, use *Stagger* and *zoom* buttons



Editors, Views, Perspectives

Editors: Central Workbench Area

- Text editor, BOY Operator Interface panel, Data Browser plot, ...
 - Associated with a file. “Do you want to save?” when closed.

Views: Auxiliary panels around Editors

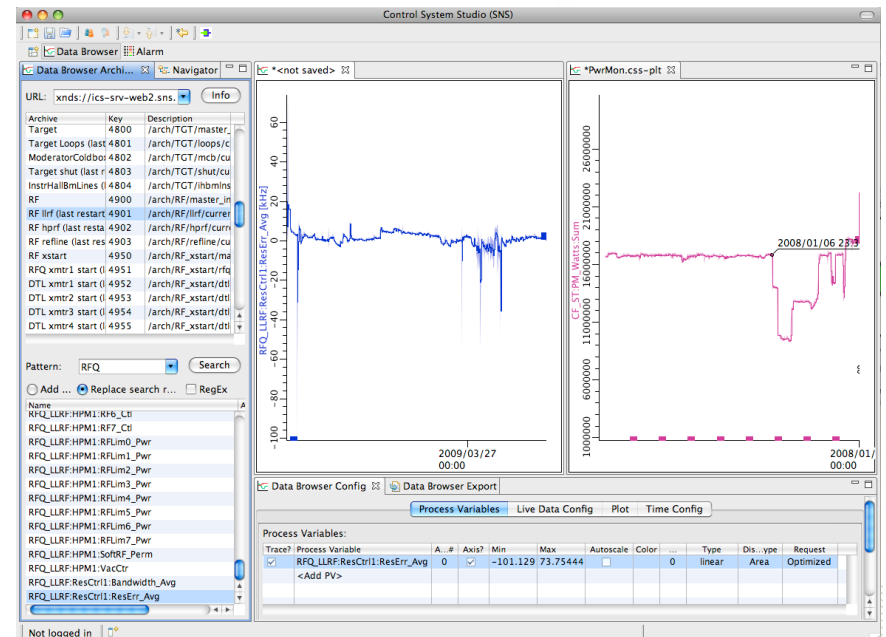
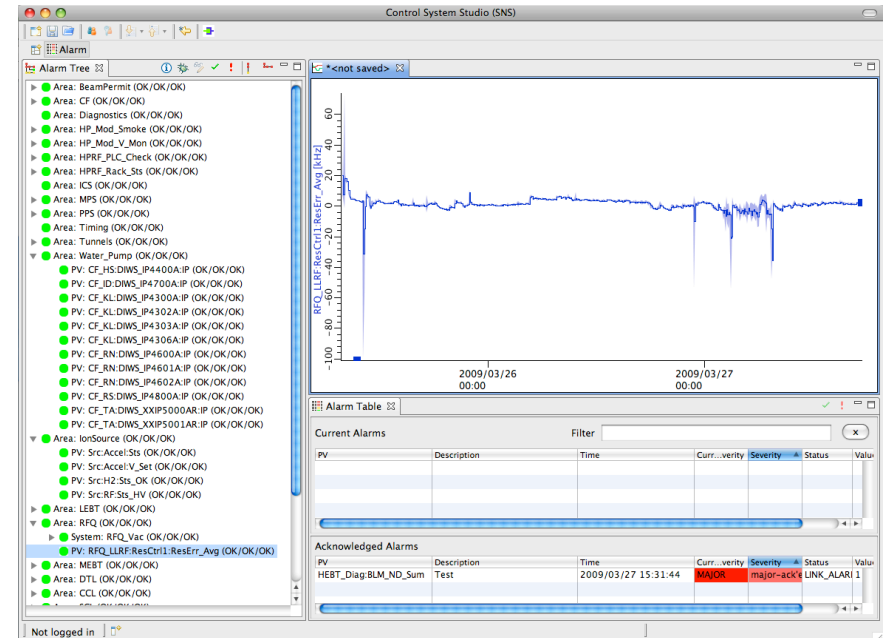
- *Probe, Properties, Navigator, ...*

Perspective: Arrangement of Editors and Views

- Size of editor area. Actual editors remain.
- *Choice of Views.* Views change when switching perspectives.

Layout Options

- Editors, Views can be closed, reopened, repositioned
 - Grab title of panel, move while watching black rectangle indicate possible target locations
 - Arrange 'behind' or 'beside' other panels
- Multiple Perspectives
 - Use Context Menu of Perspective to Name, Save, Close, Restore



Editor/View/Perspective Limitations

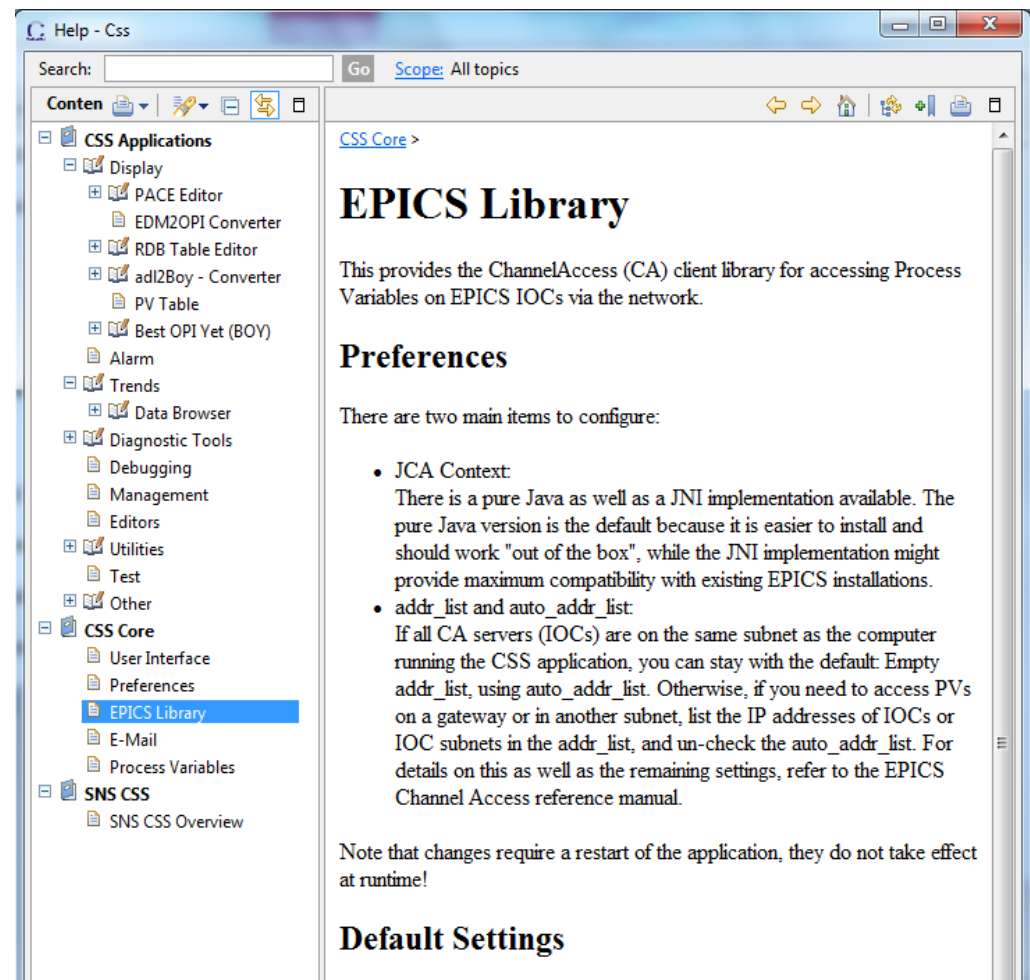
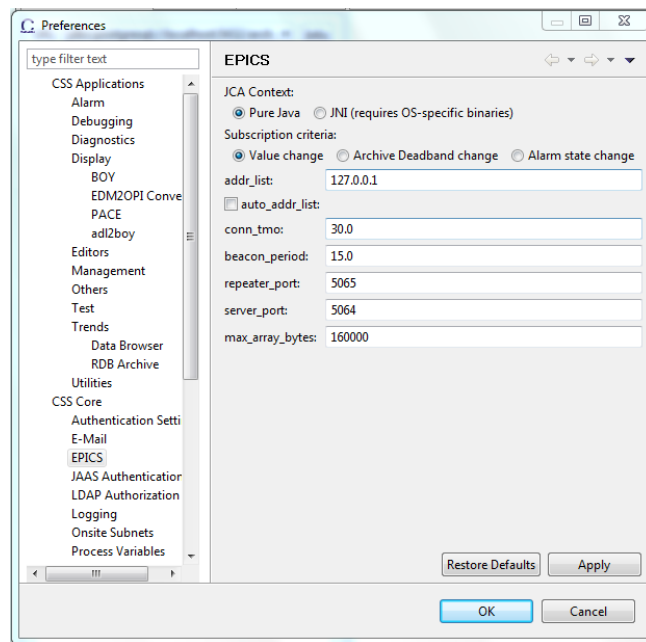
Perspectives conserve the location of 'Views'.

What we would like to “freeze” the display:

*.opi, Data Browser, Alarm Panel, ..

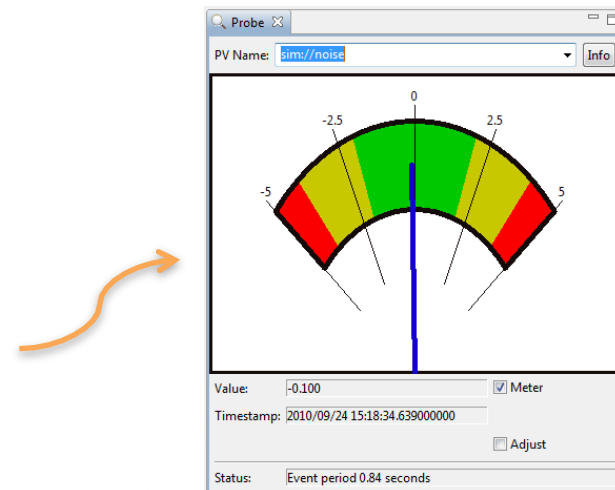
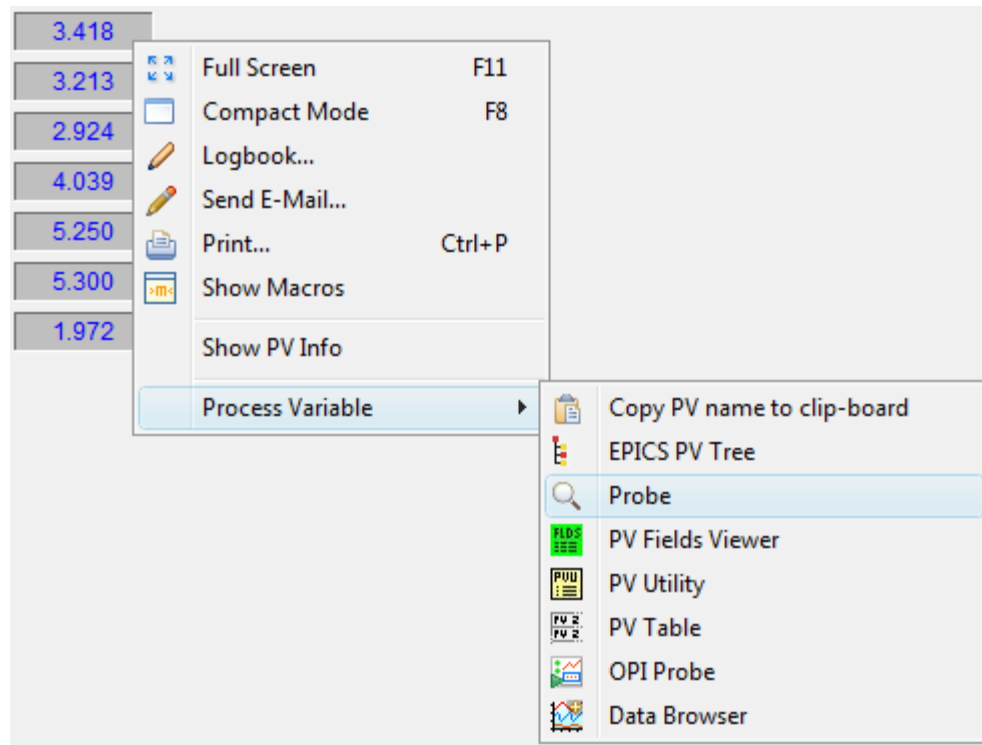
Exercise: Preferences, Online Help

- Menu *Edit, Preferences* resp. *Help, Help Content*
- Locate preferences and help for
 - CSS Core, EPICS
 - CSS Applications, Trends, Data Browser



CSS PV Exchange

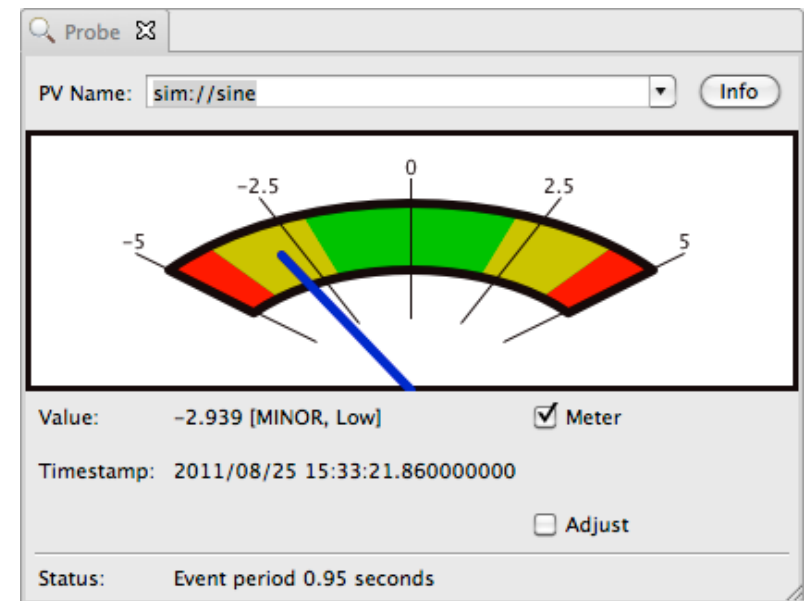
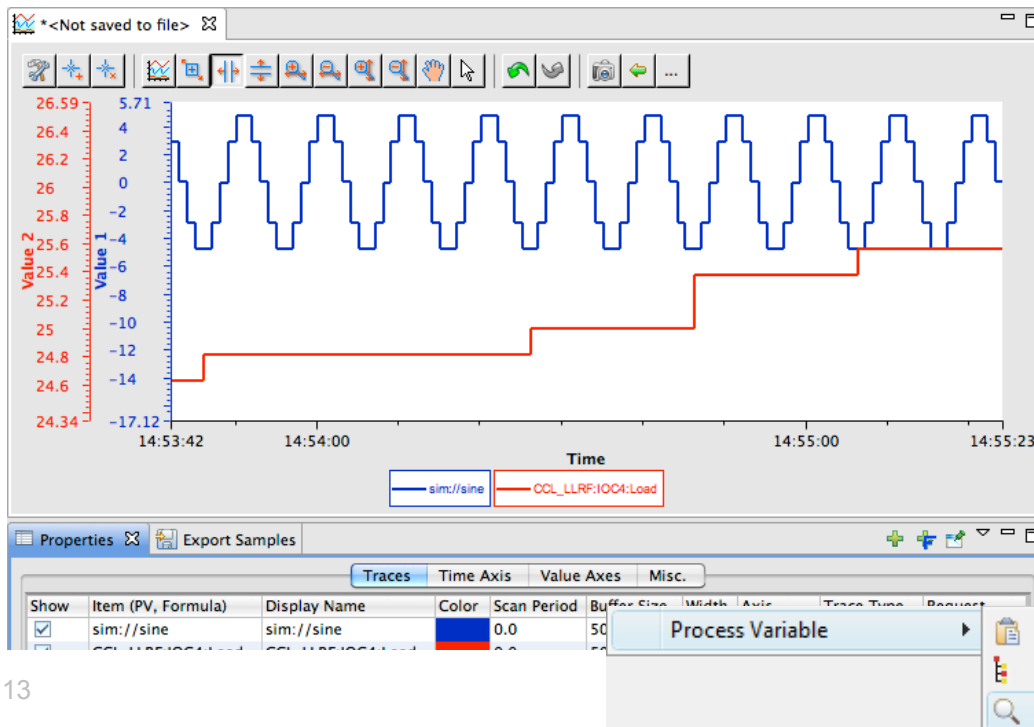
- PV in any CSS Tool
 - Context Menu → Select other PV Tools
 - Opens other tool with that PV



Exercise: Probe via PV Exchange

Open Probe on PV from Data Browser

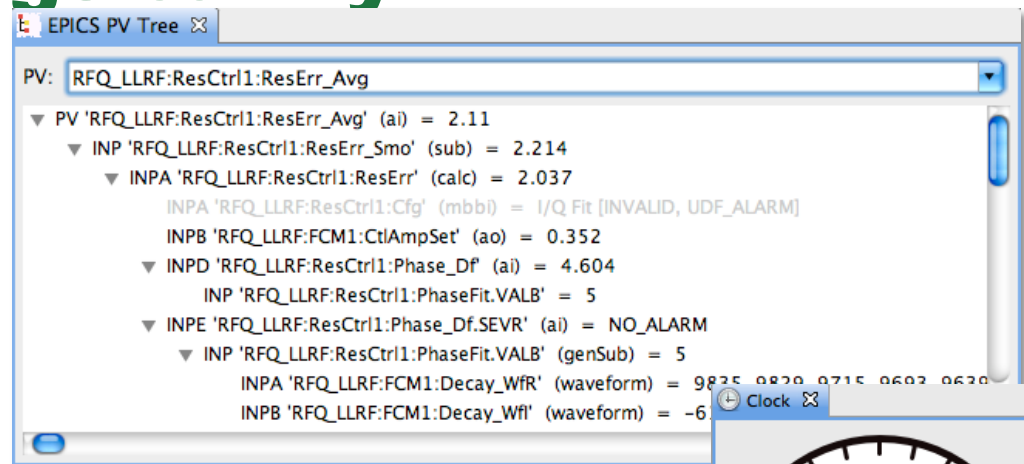
- Properties Panel
- Context menu of “sim://sine” trace
- *Process Variable, Probe*



Exercise: Things to Try

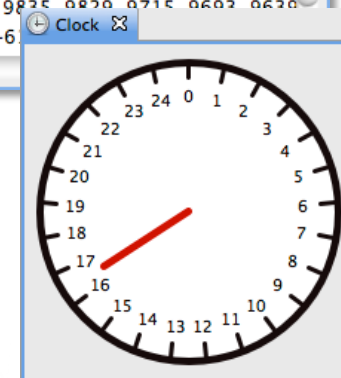
EPICS PV Tree

- Trace PV links



Clock

- What's special about it?



Therapist

- When all else fails

